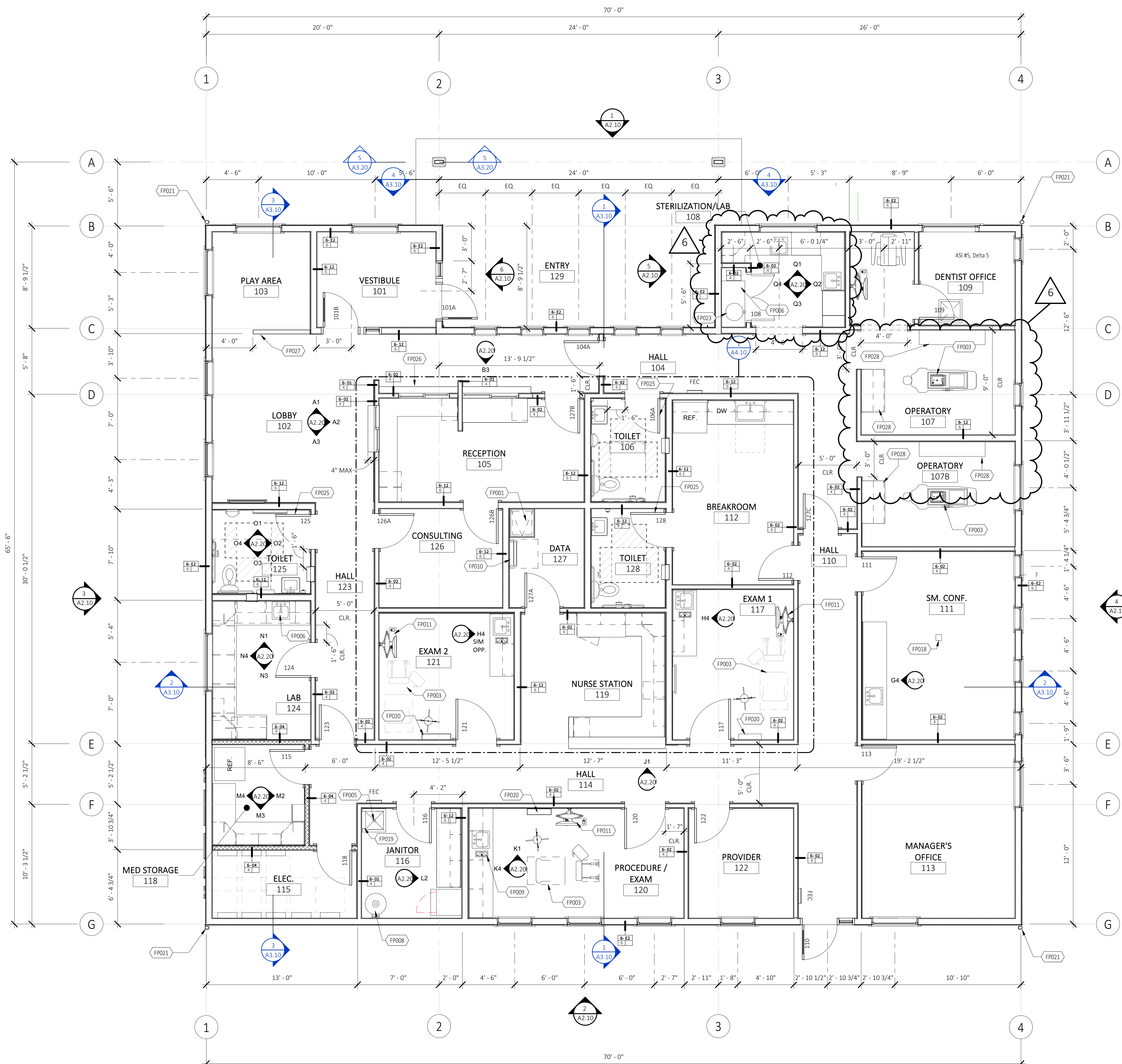


GENERAL FLOOR PLAN NOTES

- SEE SHEET A6.10 FOR WALL, FLOOR AND ROOF ASSEMBLIES
- SEE G5.10 FOR MOUNTING HEIGHTS AND ACCESSIBILITY DETAILS
- WINDOW DIMENSIONS ARE TO CENTER OF ROUGH OPENING, UNLESS NOTED OTHERWISE.
- WALL DIMENSIONS ARE TO FACE OF STUD, UNLESS NOTED OTHERWISE.
- DIMENSIONS AT DOORS ARE TO CENTERLINE OF OPENING, UNLESS OTHERWISE NOTED.
- ALL DOORS WITH GLAZING TO HAVE SAFETY GLAZING PER CODE.
- GLAZING WITHIN 24" OF DOORS TO BE TEMPERED.
- NOT NOTED OTHERWISE, INSTALL DOORS WITH HANDLE FROM INSIDE ONLY.
- DENTAL EQUIPMENT PER BURNART DENTAL SUPPLY, SEE DENTAL EQUIPMENT SHEETS FOR REFERENCE.

KEYNOTE - FLOOR PLAN	
Key Value	Keynote Text
FP001	ACCESS HATCH, SEE SPECS
FP003	EXAM CHAIR, OWNER PROVIDED, CONTRACTOR INSTALLED, SEE STRUCTURAL FOR BLOCKING
FP005	MOP SINK
FP006	SINK
FP008	WATER HEATER
FP009	COUNTER-MOUNTED WASTE-DISPOSAL DOOR, REFER TO PROJECT MANUAL SECTION 06 4100 ARCHITECTURAL CASEWORK
FP010	ACCESS LADDER AND ACCESS HATCH TO MECHANICAL MEZZANINE, SEE A5.21 DETAILS
FP011	WALL MOUNTED COMPUTER WITH MONITOR, PROVIDE BLOCKING AS NEEDED, SEE ELECTRICAL FOR POWER/DATA
FP018	FLOOR OUTLET
FP019	MOP HOLDER/SHELF
FP020	STAINLESS STEEL SHELF, 18" LENGTH
FP021	DOWNSPOUT, SEE CIVIL AND MECHANICAL DRAWINGS FOR DRAIN PIPE
FP023	DRY VACUUM SYSTEM, SEE MECH. DRAWINGS
FP025	COAT HOOKS, VERIFY WITH OWNER
FP026	ADA HEIGHT COUNTERTOP
FP027	HALF WALL, SEE DETAIL 9/A6.10
FP028	DENTAL EQUIPMENT, SEE DENTAL EQUIPMENT SHEETS

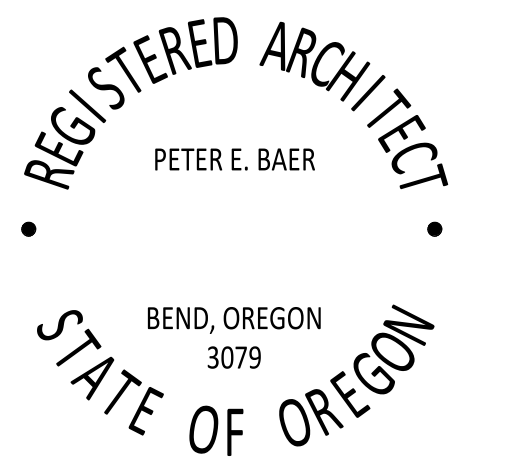


1 LEVEL 01  
1/4" = 1'-0"



"ENHANCING LIVES AND COMMUNITIES"

960 SW DISK DR, SUITE 101  
BEND OR 97702  
541.388.9897  
WWW.PINNACLEARCHITECTURE.COM



DESCHUTES RIM CLINIC

OWNER:  
WHITE RIVER HEALTH DISTRICT

PROJECT ADDRESS:  
1605 GEORGE JACKSON ROAD  
MAUPIN, OREGON 97037

APPROVED FOR	DATE	BY
PERMIT SET	04/23/2021	RYAN CAIN

DESCRIPTION	DATE
CCD 1	1/28/2022
PERMIT SET	04/21/2021
ASI 2	11/24/2021

PROJECT NO.: 2008.DRC  
DRAWN BY: JAMES DANIEL  
CHECKED BY: RYAN CAIN  
© PINNACLE ARCHITECTURE, INC. 2021 ORIGINAL SHEET SIZE: 30"x42"

FLOOR PLAN



A1.10

1/28/2022 2:20:50 PM